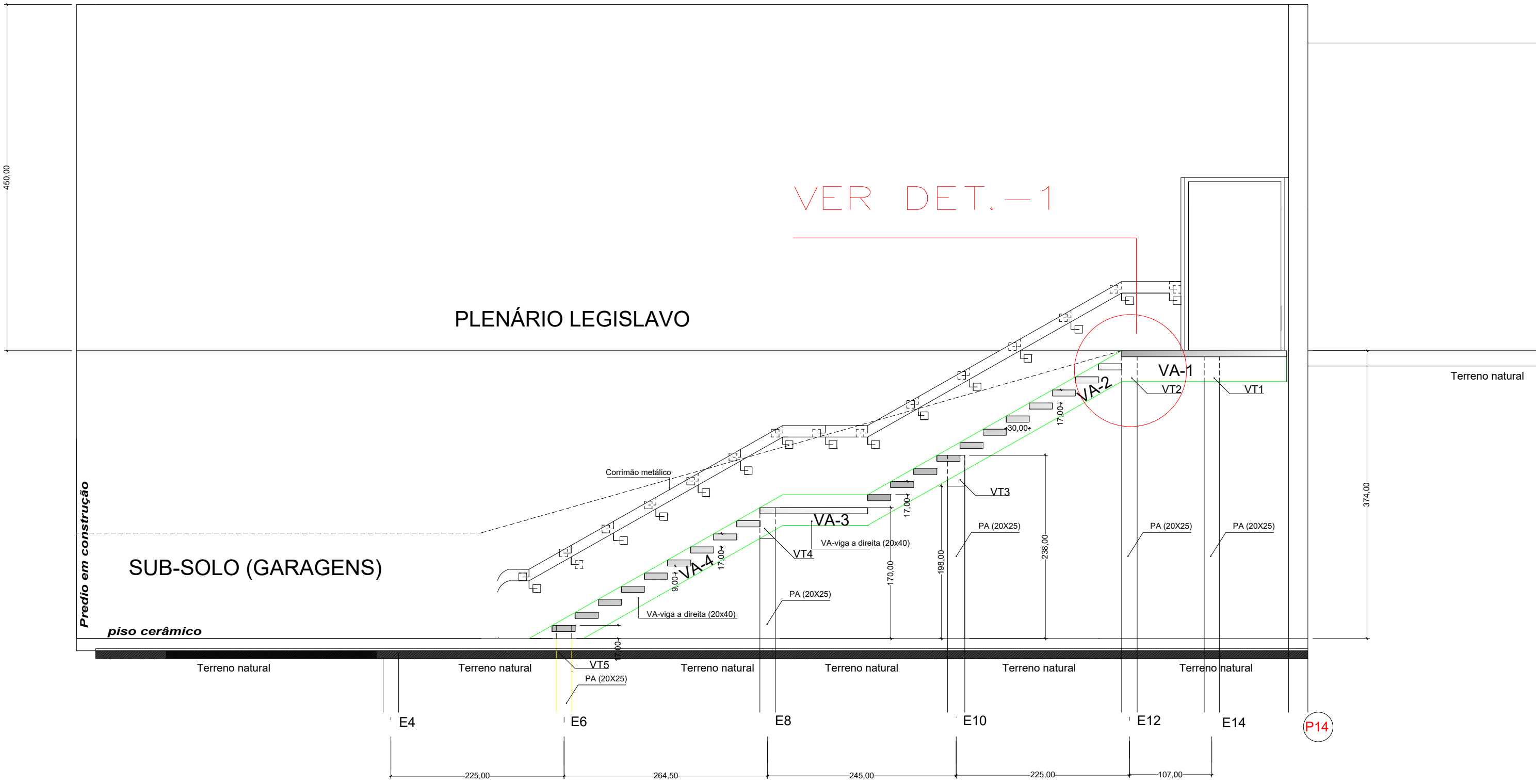
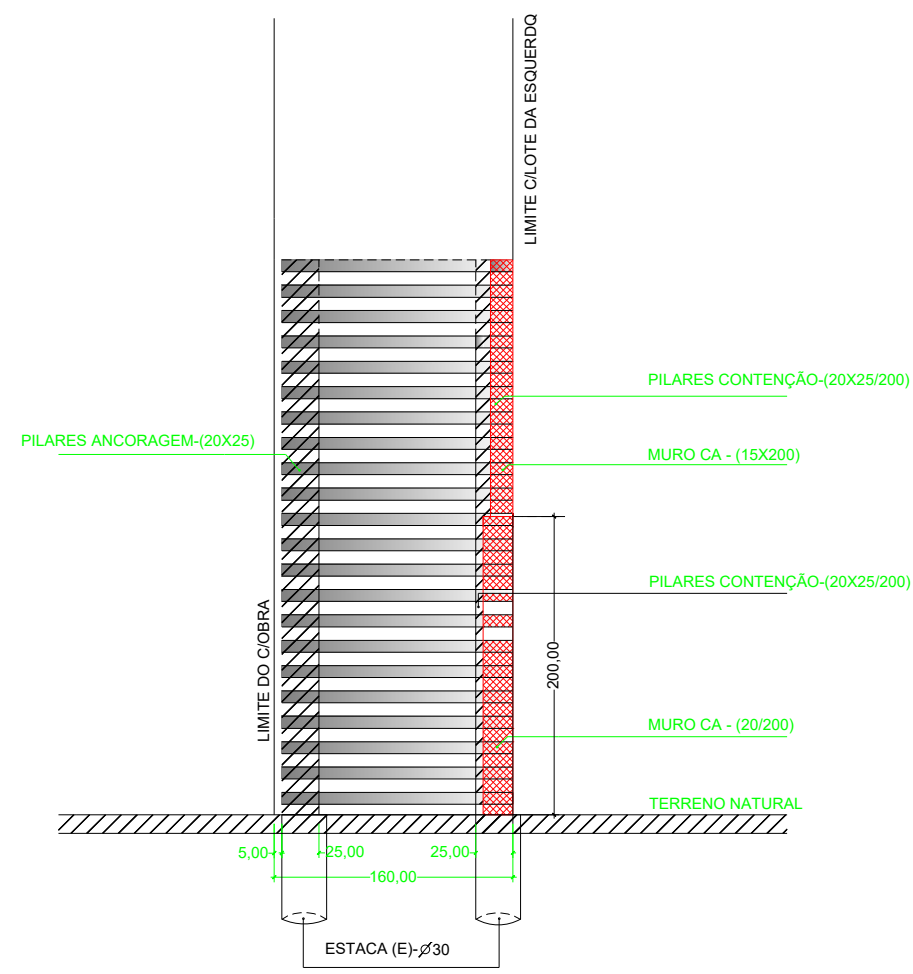


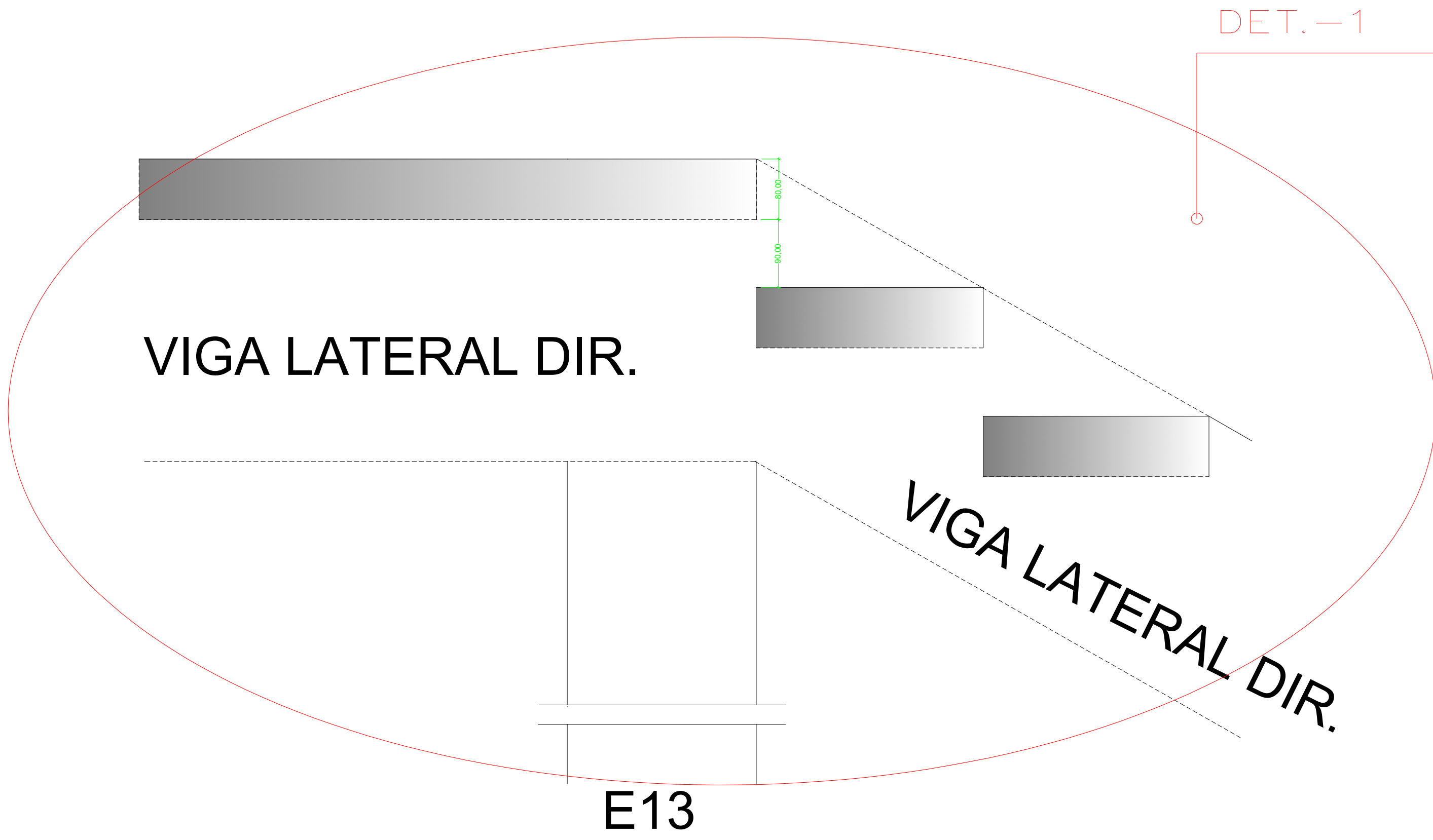
PL. ESCADA LATERAL - ESC.: 1/50



Corte AA - esc.: 1/50



Corte Esquemático
Esc.:1/50

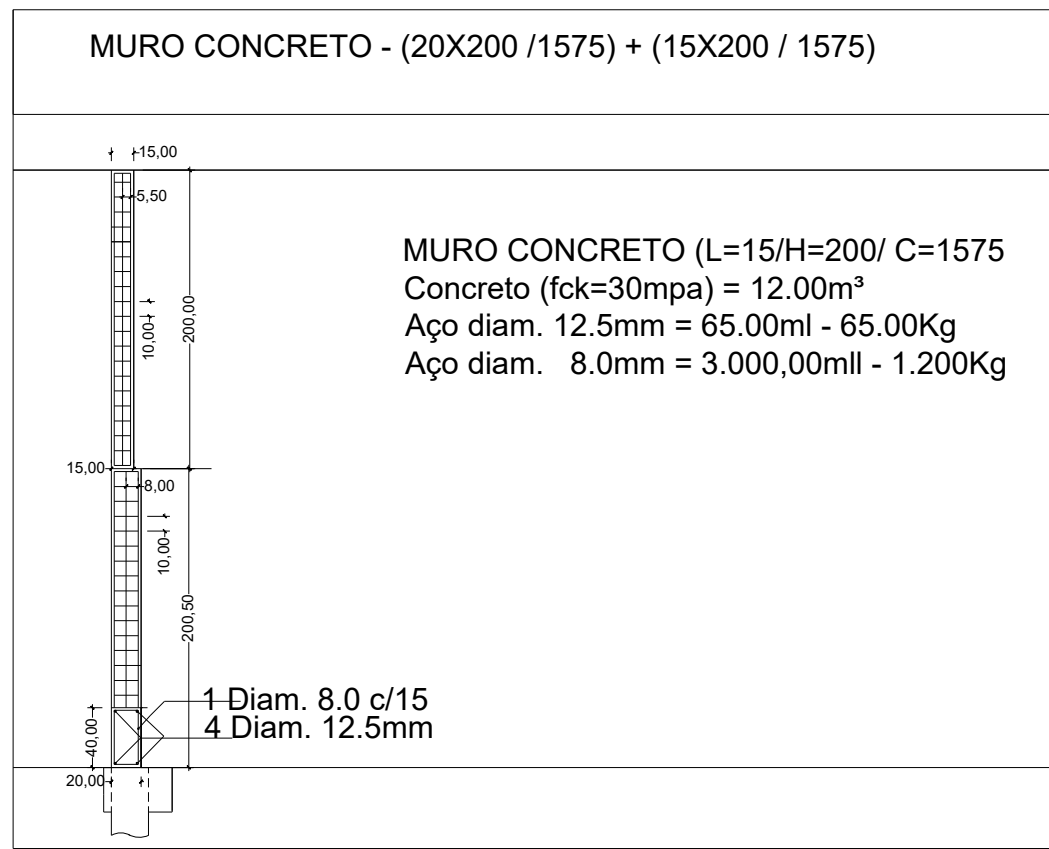


PILAR CONTENSÃO

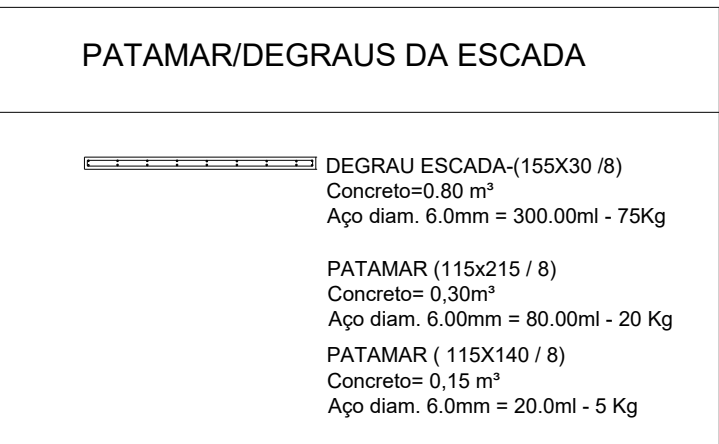
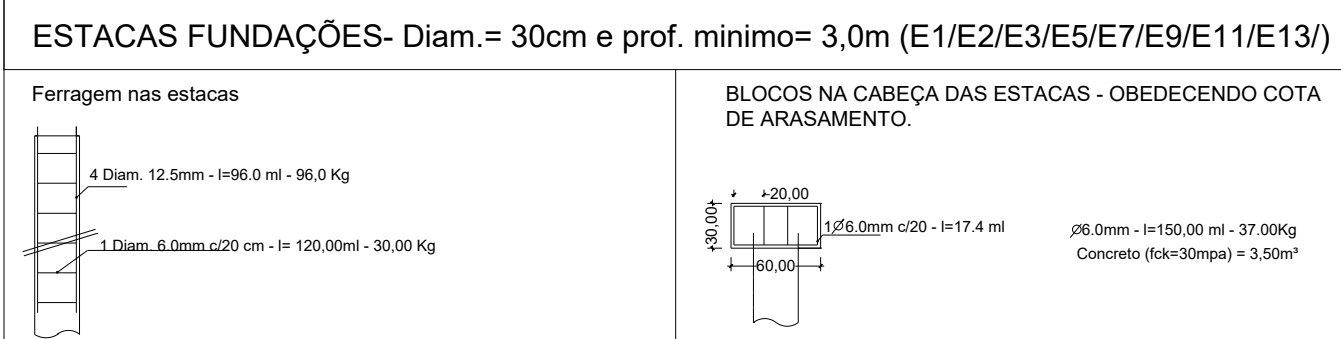
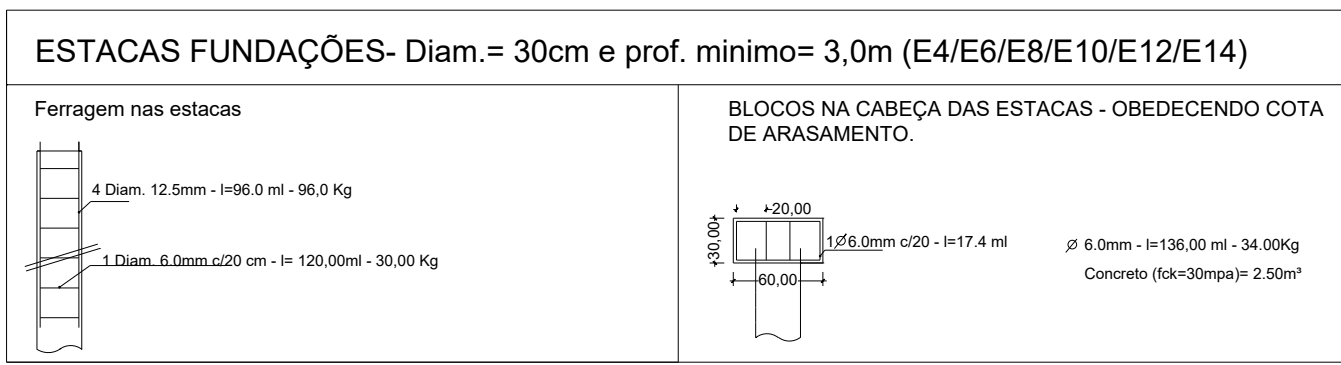
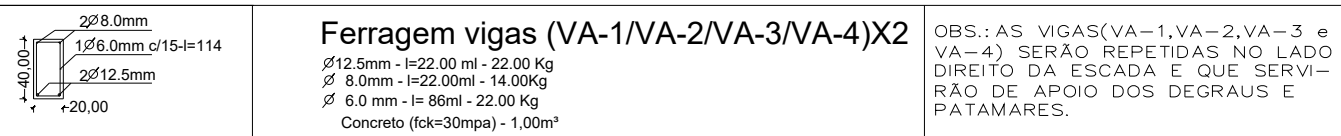
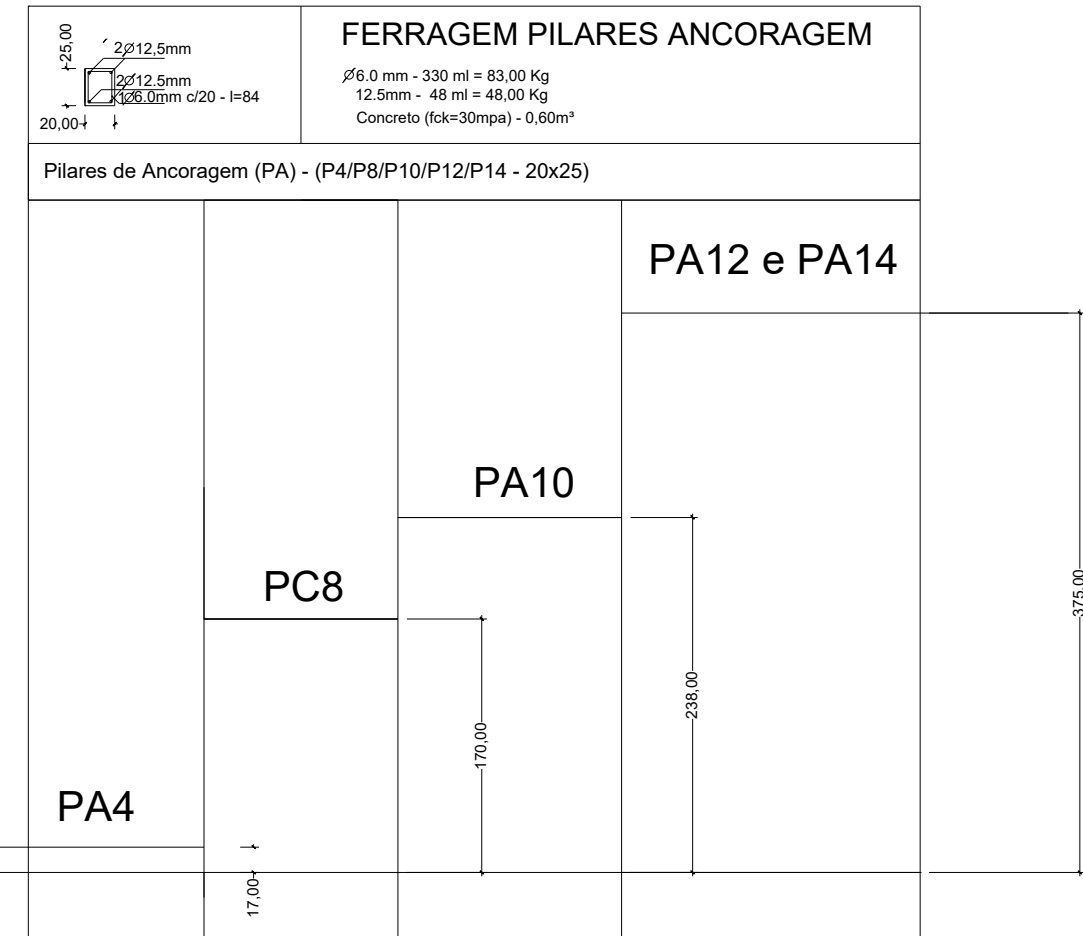
MURO

VIGAS APOIO DEGRAUS

DET. DEGRAUS APOIADOS
NA VIGA — ESC.: NENHUMA



QUANTITATIVOS - (RESUMO)	
Concreto (fck=30 mpa) =	25.00 m³
Aço diam. 6.0mm =	300.00 Kg
Aço diam. 8.0mm =	1.230.00 Kg
Aço diam. 12.5mm =	330.00 Kg



DATA	MODIFICAÇÃO				
OBRA / LOCAL: CÂMARA MUNICIPAL ARROIO DOS RATOS ARROIO DOS RATOS - RS			PROJETO ESTRUTURAL - CONCRETO ARMADO.		
PROJETISTA: Amelio Joaquim Borges Vargas Engº Civil - CREARIS 35.815					
EXECUÇÃO					
PROPRIETÁRIO					
ESCALA: INDICADA			DATA: MAR. 2023	PRANCHA: ÚNICA	
DESENHO:					
WICK:					
ESCADA ÁREA DESCOBERTA - FUGA					
MURO DE ARRIMO EM CONCRETO ARMADO					